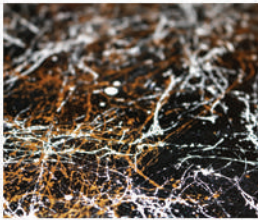
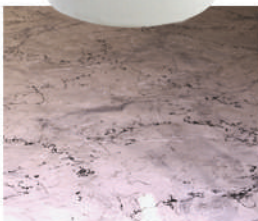


# ITALIAN MARBLE EPOXY



#### INGREDIENTS:

- ICI Neat Coat Epoxy
- Pearl Metallic Pigment
- Graphite Metallic Pigment
- Vanilla Barricade Color Pack
- Marbleizing Spray
  - Black
  - Gray
  - Gold
  - White



### ***Project Overview:***

The team at TCP were wanting to get the look of a marble/museum floor on their 2200 sq ft showroom floor.

### ***Preparation:***

Prep (Shotblast or diamond grind per prep instructions). Vacuum floor well (fully removing dust residue). Apply 2" painters tape along base of wall.

### ***Labor:***

One person mixing epoxy, one person spreading with magic trowel and another person finishing with magic trowel.

### ***Prime Coat Mixing:***

The day before: After premixing Part A Resin for 3 minutes in the original container, 2 gallon batches of Part A were measured out and poured into 5 gallon buckets. 1 bottle of Pearl Metallic and 3 oz of Vanilla Barricade color added to each of the 2 gallons of Part A and mixed well. On this project, we used 30 gallons of mixed epoxy on the prime coat, we had 10 five gallon buckets mixed up with 2 gallons of Part A + 1 bottle of Pearl metallic + 3 oz of Vanilla Barricade color in each. To create dark veining into this prime coat, we used 60 oz of ICI Neat Coat Epoxy mixed with Graphite Metallic. 40 oz of Part A Resin mixed with 1/4 of a bottle of Graphite Metallic + 20 oz of Part B Hardener.

### ***Prime Coat Application:***

Each of the 2 gallon batches of colored Part A Resin were slow mixed to remix color then 1 gallon of Part B Hardener was added to 2 gallons of colored Part A and mixed for 2 minutes. The 3 gallons of mixed epoxy was transferred to another bucket, taken to the floor and poured out in ribbons/puddles. A magic trowel was used to spread the epoxy to evenly coat the floor and each additional batch of mixed epoxy was made when needed.





### ***Veining:***

Just after the floor was coated with the Pearl/Vanilla color in each area, the dark veining mix of Graphite Metallic was made up and random veining were done by randomly drizzling mixed graphite epoxy around the floor off of the end of a paint stick (into the wet pearl/vanilla epoxy).

### ***Magic Trowel***

After the graphite veins are drizzled on the floor, take a magic trowel and float it over the surface (specifically on the dark veins to soften veining).

### ***Product used:***

- 30 gal ICI Neat Coat Epoxy
- 20 bottles Pearl Metallic
- .5 gallons Graphite ICI Neat Coat Epoxy
- 2- 32 oz bottles Vanilla Barricade color pack

### ***Marble Coat Mixing:***

The day before: After premixing Part A Resin for 3 minutes in the original container, 2 gallon batches of Part A were measured out and poured into 5 gallon buckets. 1 bottle of Pearl Metallic added to each of the 2 gallons of Part A and mixed well. This load of pigment (1 bottle of Pearl per 3 gallons of mixed epoxy) was a slightly transparent mix to allow the dark marble veining to transfer through from the prime coat. We used 30 gallons of mixed epoxy on this coat so we had 10 five gallon buckets mixed up with 2 gallons of Part A and 1 bottle of Pearl metallic.

### ***Marble Coat Application:***

Each of the 2 gallon batches of colored Part A Resin were slow mixed to remix color then 1 gallon of Part B Hardener were added to 2 gallons of colored Part A and mixed for 2 minutes. The 3 gallons of mixed epoxy was transferred to another bucket, taken to the floor and poured out in ribbons/puddles. A magic trowel was used to spread the epoxy evenly over the floor and each additional batch of mixed epoxy was made when needed. Magic troweling initially to coat the floor and then going back out to “float” the magic trowel over the surface to evenly level the surface as best as possible. At this time and on this project, we used the black marbleizing spray to mist into the wet epoxy as we moved across the floor (after the final magic troweling was down in that particular area). This is something that can be done after the epoxy is set up as well and in hindsight, we would have sprayed this on after the Marble Coat had set up.

### ***Product used***

- 30 gallons of ICI Neat Coat Epoxy
- 10 bottles Pearl Metallic
- 3.5 bottles of Black Marbleizing Spray

### ***Marbleizing Spray***

The next morning, we used the grey, gold and white marbleizing spray (one after the other) to create marbled veining throughout the whole floor. These are a fast setting colors which allows you to quickly move from one color to the next.





## ***Diagonal 8' squares separated by 1' border***

A couple of hours after the Marbleizing colors were good and set, we started designing our large diagonal tile pattern. We found the center of the room by: Measuring the length of the front and back walls and finding the center point. From that center point, we ran 1/4" green specialty tape from the center of the front wall to the center of the back wall. Measuring the length of the left and right side walls and finding the center point. From that center point, we ran 1/4" green specialty tape from the center of the left wall to the center of the right wall. The spot in the floor where the 2 pieces of tape crossed was our center point.

### ***Here is the mathematical formula for figuring the diagonal crossing points on diagonal tile:***

For every foot (12") wide that the tile is, add 5" to that, divide by 2 and that is the distance you measure out from your center point. On this project, we were doing large 8' squares (96" wide).  $8 \times 5" = 40"$  •  $96" + 40" = 136/2 = 68"$

We measured out from the center point on guide tape in all four directions 68" out and made a mark on the tape there. The first couple of diagonal lines are the hardest to lay. The diagonal lines must touch the marks made 68" out from center. There are a couple ways to accomplish this but a laser level is the most effective: Lay the laser level on the floor to have the laser cross and touch both diagonal points on the tape. Mark on the wall with painter's tape & a marker where the laser hits the wall. Switch and run the laser in the opposite direction (making sure it touches both diagonal points again) and mark the opposite wall where the the laser hits the wall. Run your first piece of 1/4" green specialty tape from the 2 diagonal marks on the wall (making sure the tape crosses 2 diagonal points on the tape). Rotate 90 degrees now and do the same thing with the laser level to lay the next diagonal line. Once those first two lines are laid, you can lay a measuring tape on each end of diagonal tape (by the walls) to measure across 8' and run a diagonal line from wall to wall (making sure that the tape touches the markings on the tape in center). Finish the final line on the center diagonal tile by doing the same thing you just did with the measuring tapes in the other direction. With a razor knife, cut to remove the initial guide/crossing lines that you used to find the center of the room. Use a 12" ruler to lay on either side to run our next line off of the center square. Continuing in the same direction across the floor, use measuring tapes to measure 8' and lay your next line. Continuing in the same direction, use the 12" ruler to run the next line. Continue that until you can go no further. Rotate 90 degrees and tape the entire floor in the same fashion (12" followed by 8'). After entire floor design is taped out, with a razor knife, cut out the excess 1/4" tape in the center of where the 12" borders cross (eliminating the 1' squares). Take 2" painters tape and mask off each 8' square to protect it when you paint the borders.

### ***Product used:***

- 6 rolls 1/4 Green Specialty Tape
- 6 rolls 2" Green Specialty Tape



## ***Coating Borders - Graphite Neat Coat***

Mix a little at a time (16 oz of Part A with 8 oz of Part B). Pour mixed epoxy in the center of the border and use a 6 inch foam cabinet roller (on a small frame and broom handle) to paint the borders.

### **Product used:**

- 3 gallons of Graphite ICI Neat Coat Epoxy
- 2 bottles of Graphite Metallic

## ***Marbleizing Borders***

After the borders were painted and still wet, we sprayed white then gold marbleizing spray into them (utilizing cardboard to protect against overspray into the rest of the floor). It may be best in your situation to already have every square masked off with masking paper so cardboard (and helpers) would not be necessary at this step.

### **Marbleizing Spray used to marbleize floor and borders:**

- 6 Black
- 9 Grey
- 14 Gold
- 16 White

## ***Remove Border Tape/Masking***

After the border graphite metallic epoxy is set, remove tape and masking from floor. Any bleed found can be scratched off with a razor knife. Floor can be blown clean with a leaf blower (you will have some marbleizing spray residue that will come off when you pull tape).

## ***Top coat***

Final top coat of ICI Neat Coat Epoxy over the entire floor (shooting for around 80 sq ft a gallon). The clear coat was put down in 3 gallon batches, poured out, magic troweled and back-rolled evenly with an 18" - 3/8" nap roller.

### **Product Used:**

30 gallons of ICI Neat Coat Epoxy